

What's New in FY2014 for Foster Homes in GA+SCORE?

Revised Screen

- Foster Home Roster – Home are listed in one of three sections:
 - **"Submitted to GA+SCORE"** – CPA submitted request to add new foster home to GA+Score for Care Solutions action
 - **"Application in Process - No Placements Allowed"** - Initial approval requirements being collected by the CPA, or home has been submitted for OPM evaluation and action.
 - **"Open Foster Homes (in SHINES)"** - CPAs and OPM manage FH records in any open status including: Approved, 30-Day Grace, On Hold, Unapproved 31 Days, Unapproved 61 Days

New Screens

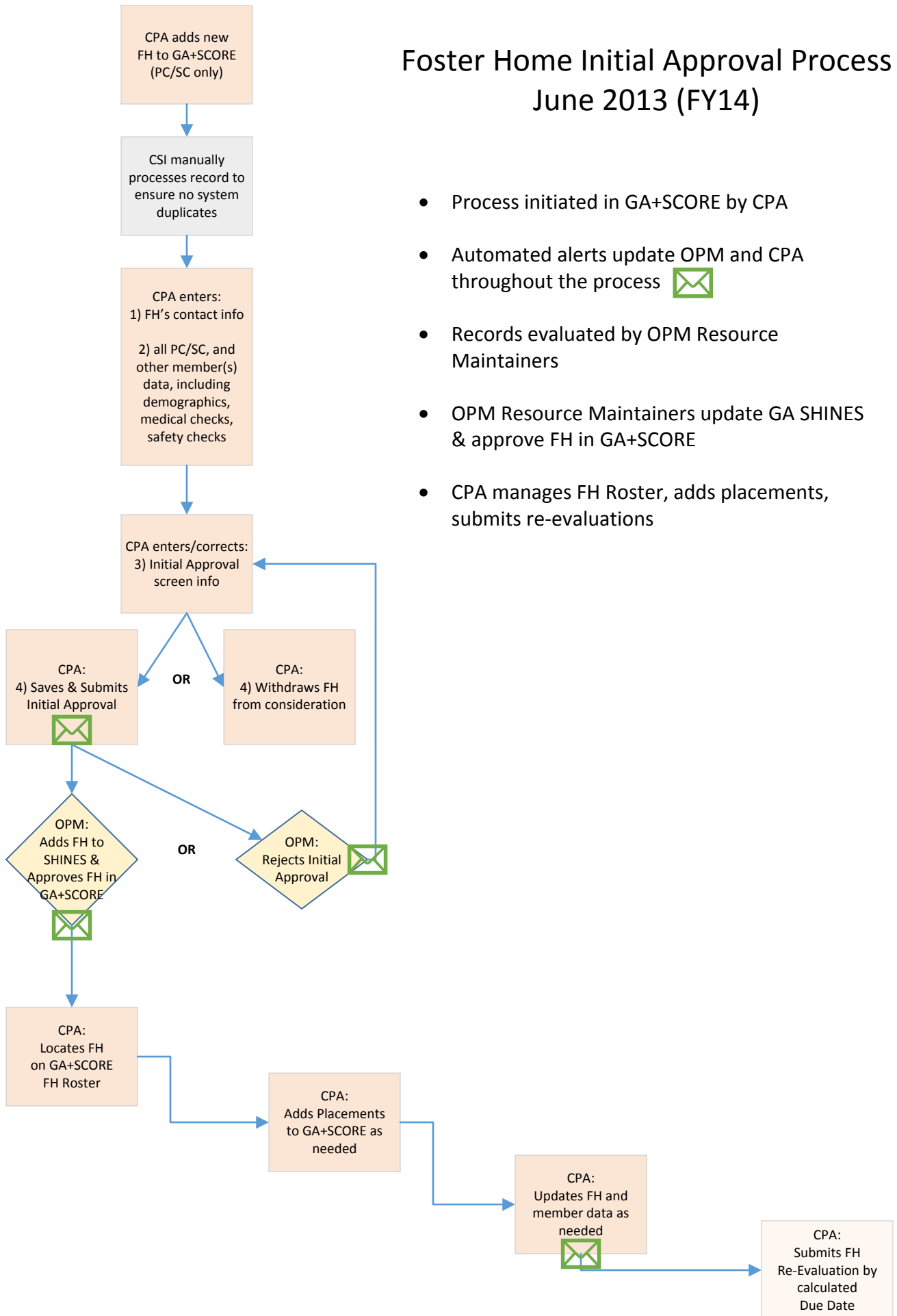
- **Initial Approval** - collects data for initial foster home approval
 - Built-in system logic to ensure complete and accurate record submissions (PC/SC/Other Members demographics, safety & medical requirements, and initial approval fields)
- **Re-Evaluation** - collects data for new foster home reevaluation and displays previous reevaluation data
 - Built-in system logic to ensure complete and accurate record submissions (PC/SC/Other Members demographics, safety & medical requirements, and re-evaluation fields)
- **Addenda** – collects data required by CPAs to update FH information and displays previous addendum
 - OPM required to approve Capacity Increases, other requests automatically accepted
- **Policy Violations**
 - Tracking low and serious risks & their statuses
 - Tracking CAPs & OPM Dispositions

New Processes/Communications/Reporting

- **OPM FH review and required status determinations in GA+SCORE**
 - OPM approve/reject CPA foster home initial approvals and reevaluations in GA+SCORE
 - Built-in system logic prevents placements prior to FH approval or if the FH is on hold or unapproved for any reason
- **Automated system alerts between CPAs and OPM**
 - More than 12 alerts between parties throughout the process
- **Event-driven automated FH status**
 - Automated "Current FH Status" displayed on roster dependent on OPM and provider system activity and # of consecutive calendar days out of compliance, if any
- **New reporting**
 - Available to Providers and OPM:
 - **Foster Home Initial Approval** - available after CPA submits IA record

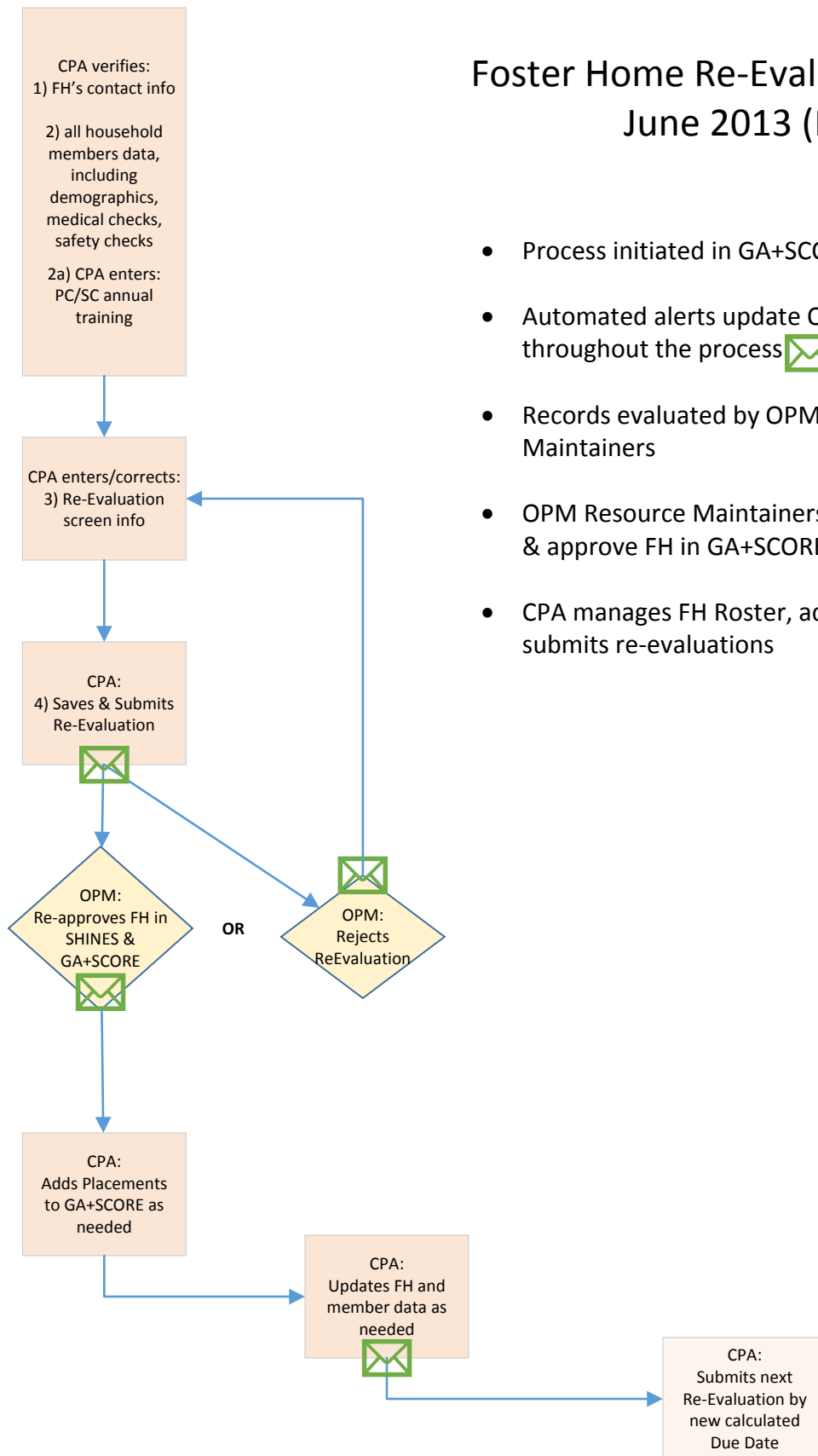
- **Foster Home Re-Evaluation** - available after CPA submits RE record
- **Foster Home Snapshot** - gives providers a summary of an individual open FH
- **Available to OPM:**
 - **FH Requests Pending OPM Approval** - used to catch anything missed during normal daily routines
 - **Overdue Home Re-Evaluations** – used to update SHINES FH status


Foster Home Initial Approval Process June 2013 (FY14)



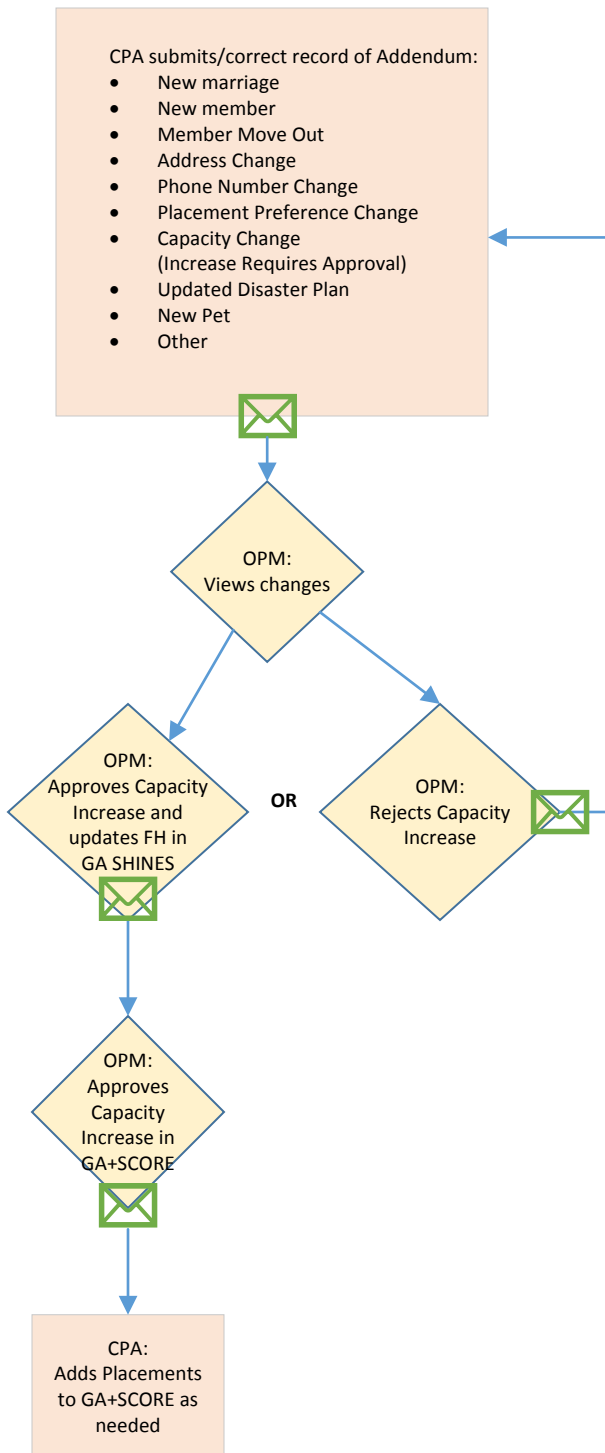
- Process initiated in GA+SCORE by CPA
- Automated alerts update OPM and CPA throughout the process
- Records evaluated by OPM Resource Maintainers
- OPM Resource Maintainers update GA SHINES & approve FH in GA+SCORE
- CPA manages FH Roster, adds placements, submits re-evaluations


Foster Home Re-Evaluation Process June 2013 (FY14)



- Process initiated in GA+SCORE by CPA
- Automated alerts update OPM and CPA throughout the process 
- Records evaluated by OPM Resource Maintainers
- OPM Resource Maintainers update GA SHINES & approve FH in GA+SCORE
- CPA manages FH Roster, adds placements, submits re-evaluations

Foster Home Addenda Process June 2013 (FY14)



- Process initiated in GA+SCORE by CPA
- Automated alerts update OPM and CPA throughout the process 
- Records evaluated by OPM Resource Maintainers
- OPM Resource Maintainers update GA SHINES
- OPM Resource Maintainers approve capacity increase requests in GA+SCORE